



hospitality

Circuit de Barcelona · Catalunya

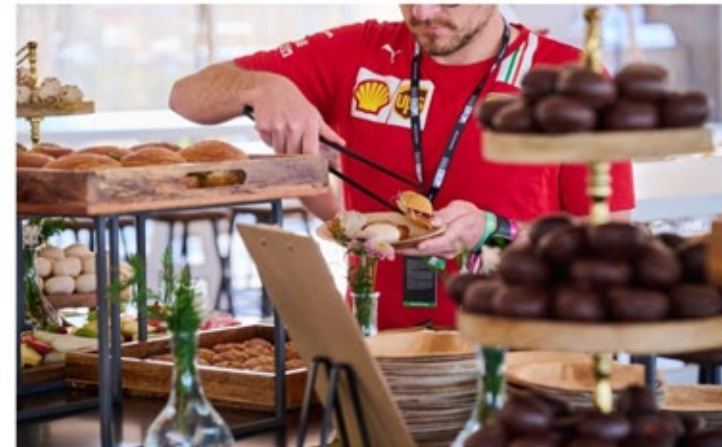


GARDEN VILLAGE

- Outdoor space, located next to Grandstand H, at the last corner before entering the straight.
- Access to Tribune H and Garden Village, with lounge area, gastronomy, and live music.
- Shared space with a capacity for up to 600 people. Sold per person.

Includes:

- **Grandstand H:** Non numbered seat with access for 3 days (Friday, Saturday, and Sunday), subject to availability.
- **Garden Village:** Access for 2 days (Saturday and Sunday) with full catering service and open bar.
- **Parking** not included, available with a supplement.



PALCOS RECTA

- Space located on the main straight of the Circuit, with views of the Pit Lane exit and in front of the Circuit's scoreboard.
- Space with a capacity for 260 people. Sold per person.

Includes:

- **Palcos Recta:** Access for 3 days (Friday, Saturday, and Sunday).
- Full catering service and open bar for all 3 days (Friday, Saturday, and Sunday).
- **Parking** not included.



- Space located on the 3rd floor of the main grandstand, in front of the main straight, directly in front of the Pit Lane.
- Space with a capacity for 350 people, located on the third floor of the main grandstand. Sold per person. Panoramic view.

Includes:

- **Covered Main Grandstand:** Access with non-numbered seat for 3 days (Friday, Saturday, and Sunday), subject to availability.
- **Sky View:** Access for 2 days (Saturday and Sunday) with full catering service and open bar.
- Accessible for **PMR** (persons with reduced mobility).
- **Parking** not included, available with a supplement.
- TV screens.



PITLANE LOUNGE * COMING SOON

- Space located on the second floor of the Pitlane Lounge Building in front of the scoreboard with capacity for 200 people.
Balcony with a view of the court.
Terrace with panoramic view.

Includes:

- Full restaurant service and open bar 3 days a day.
Accessible for people with reduced mobility.
Covered Grandstand T-10 Roof: access for 3 days (Friday, Saturday and Sunday).
Parking included
TV screens.



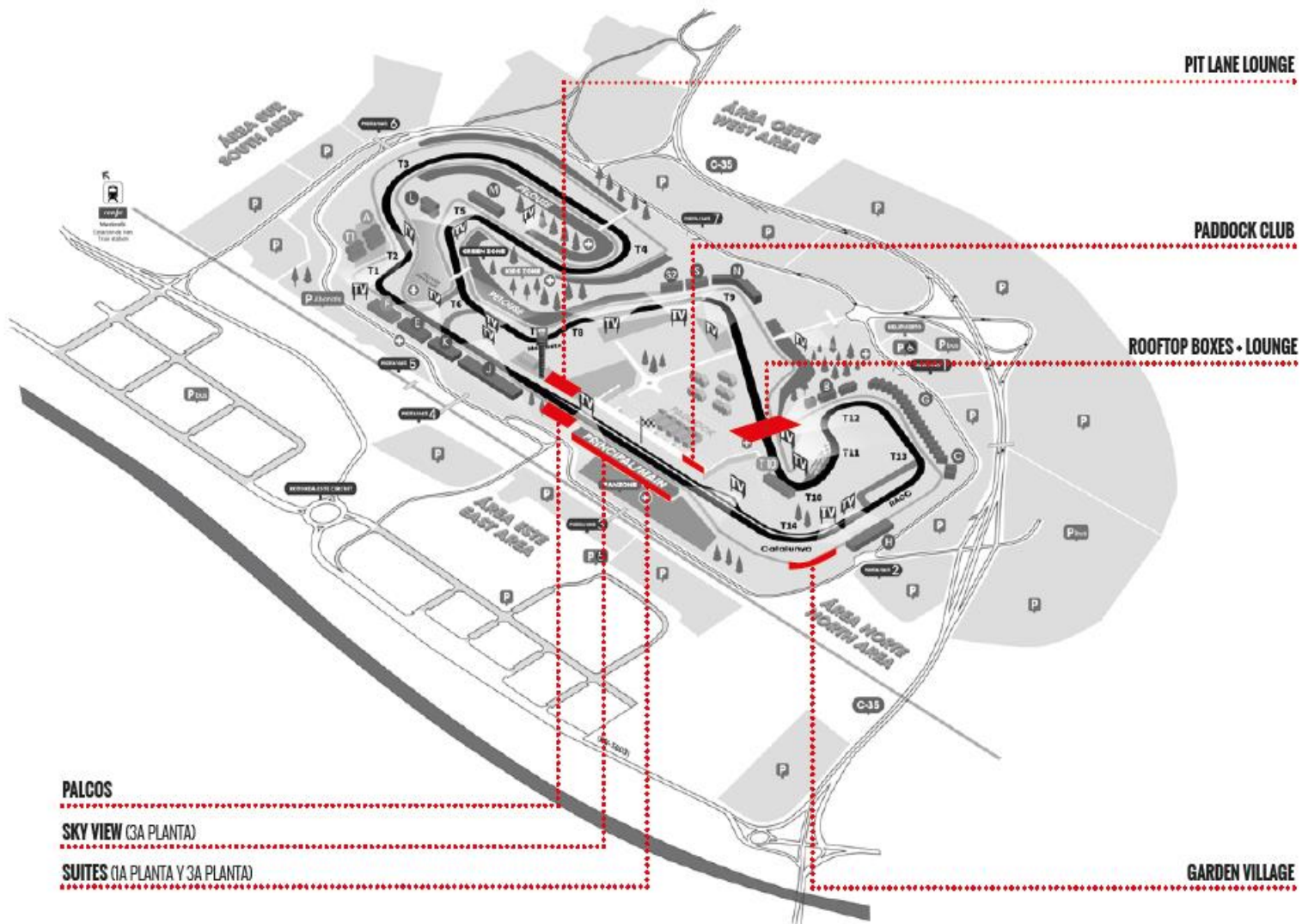
CIRCUIT ROOFTOP LOUNGE

- Space located on the 2nd floor of the Rooftop, a new building designed to offer a high-end experience.
- Space with a capacity for 200 people. Sold per person.

Includes:

- **Rooftop Lounge:** Access for 3 days (Friday, Saturday, and Sunday).
- Access to the terrace with panoramic views.
- **Covered T-10 Grandstand:** Access for 3 days (Friday, Saturday, and Sunday).
- Michelin-star gastronomic service and open bar for all 3 days (Friday, Saturday, and Sunday).
- Incredible experiences: such as driving F1 simulators, live music, welcome pack.
- Accessible for **PMR** (persons with reduced mobility).
- **Parking included.**





PIT LANE LOUNGE

Paddock Club

ROOFTOP BOXES - LOUNGE

PALCOS

SKY VIEW (3A PLANTA)

SUITES (1A PLANTA Y 3A PLANTA)

GARDEN VILLAGE